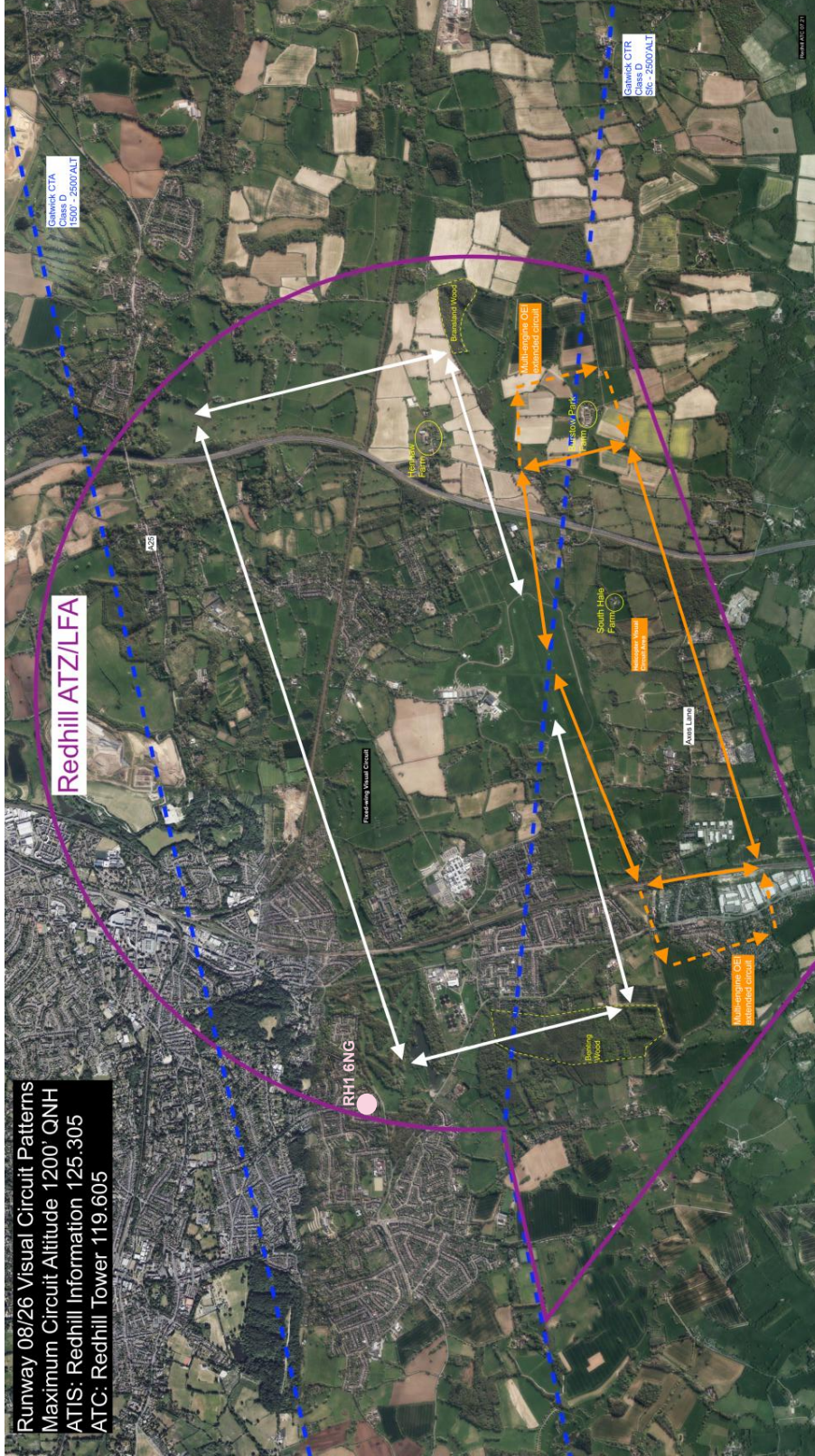


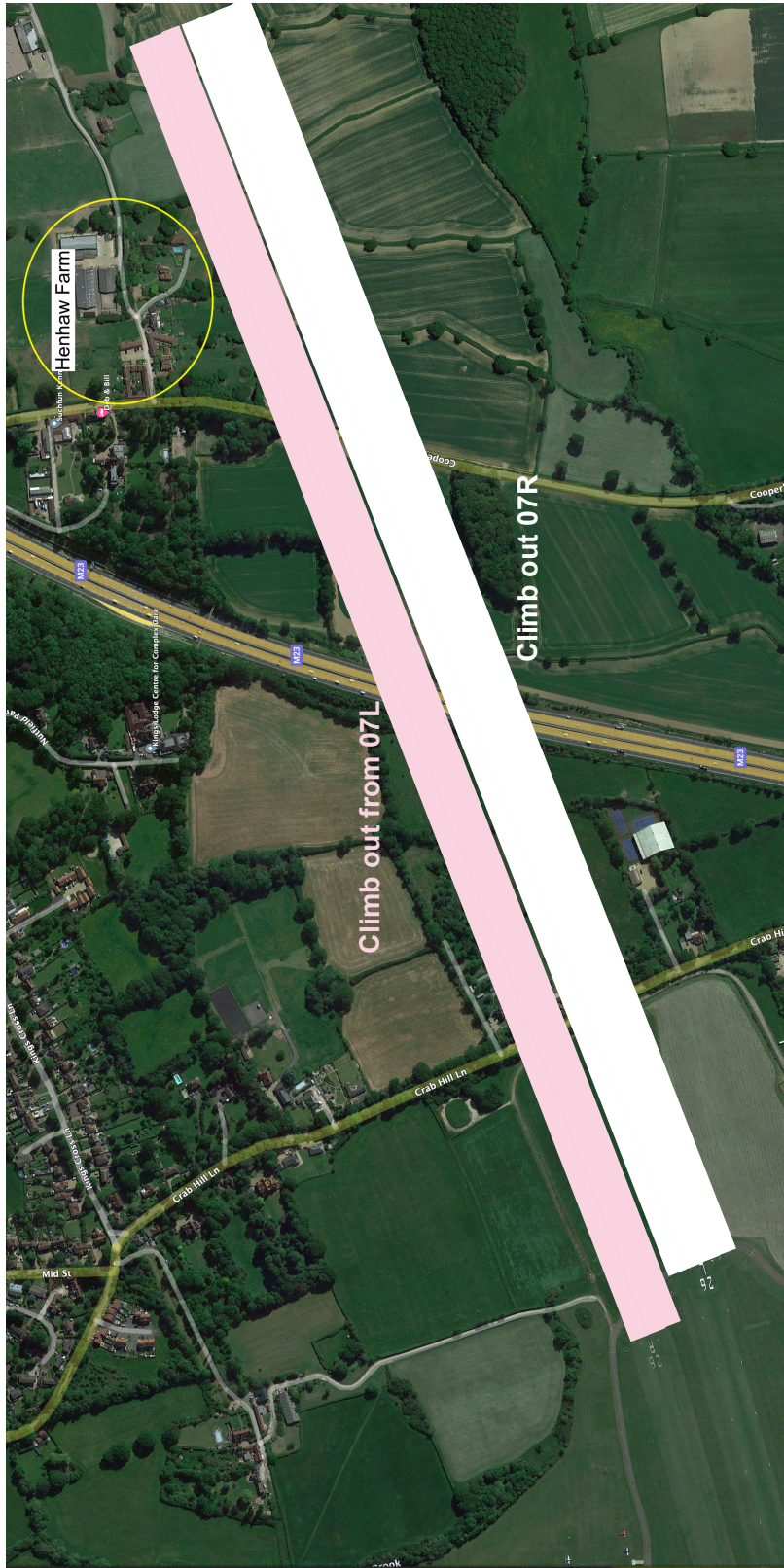
Reference	Date/Time	Location	Runway	F/W Movements	Total Movements	Complaint	Action
FW2022/17	11.10.2022 1750hrs	RH1 6NG within ATZ	08R	122	160	Aircraft overflying the location.	The complainant resides with the ATZ adjacent to the visual circuit pattern. Whilst aircraft should usually be south of this location it may overflow or subject to aircraft noise during busy periods whenever Rwy 08/26 is in use. Complainant also states aircraft are straying from the "permitted flight path." There is no such thing; pilots flying under visual flight rules (VFR) are responsible for their flight path especially with regards to adjusting their flight path to fit in with other traffic. See Appendix 1 for location. NFA.
FW2022/18 and FW2022/19	18.10.2022 1530hrs and 1538hrs.	RH1 5PD within ATZ	07L	121	152	Aircraft overflying the location.	This complaint relates to aircraft departing from 07L during a period when 07R was out of use due to works on the threshold markings. The complainant resides adjacent to the climb out from Rwy 07L. The visual circuit requires pilots to climb straight ahead until passed the Henhaw Farm complex before commencing the left turn on to the crosswind leg. The southern edge of this complex is less than 100m from the climb out area from 07L. Pilots are more likely to fly close to or over this location when 07L is in use as opposed to 07R. Complainant spoken with. See Appendix 2 for location.
FW2022/20	25.10.2022 1307hrs	RH1 5PD within ATZ	07L	83	124	Aircraft overflying the location.	This complaint relates to aircraft departing from 07L during a period when 07R was out of use due to works on the threshold markings. The complainant resides adjacent to the climb out from Rwy 07L. The visual circuit

							<p>requires pilots to climb straight ahead until passed the Henhaw Farm complex before commencing the left turn on to the crosswind leg.</p> <p>The southern edge of this complex is less than 100n from the climb out area from 07L.</p> <p>Pilots are more likely to fly close to or over this location when 07L is in use as opposed to 07R. Complainant spoken with. See Appendix 2 for location.</p>
--	--	--	--	--	--	--	---

**Appendix 1 - Redhill Aerodrome Fixed-wing Flying Complaints October 2022**



Appendix 2 - Redhill Aerodrome Fixed-wing Flying Complaints October 2022





## Helicopter Flying Complaints – October 2022

Nil